

Presentation for Overview & Scrutiny

Worcestershire Strategy for Children and Young People with Special Educational Needs and Disabilities (SEND) 2023-2026



Vision

In Worcestershire we want all children and young people with special educational needs and / or disabilities to be truly seen and respected as individuals and to be the best they can be.

Principles

- Commitment to listening to and working with children and young people with SEND and their families to further improve, develop and innovate our SEND Strategy and the delivery of support and services.
- Recovery from the pandemic. We must understand the impact for CYP and continue to adapt to support and prevent lasting effect.
- Taking an all-age disability approach within our SEND Local Offer. This will ensure a seamless experience for CYP from 0-25 with SEND and their families.
- Commitment to the effective and efficient use of resources. This will support early intervention prevent escalation of need and promote inclusion

SEND Strategy 2023 – 2026 Priorities

Identification and assessment of SEND is timely and effective

There is sufficient and effective SEND provision

There is awareness and understanding of SEND within local communities

Outcomes for young people with SEND are improved as a result of effective planning, preparation for adulthood and better coordination of service delivery to ensure positive transitions as they progress through their education

CYP with autism achieve positive outcomes and the support required to enable this is in place

Emotional health and wellbeing is actively promoted for CYP with SEND and effective targeted and specialist support is available for those at risk of, or experiencing difficulties

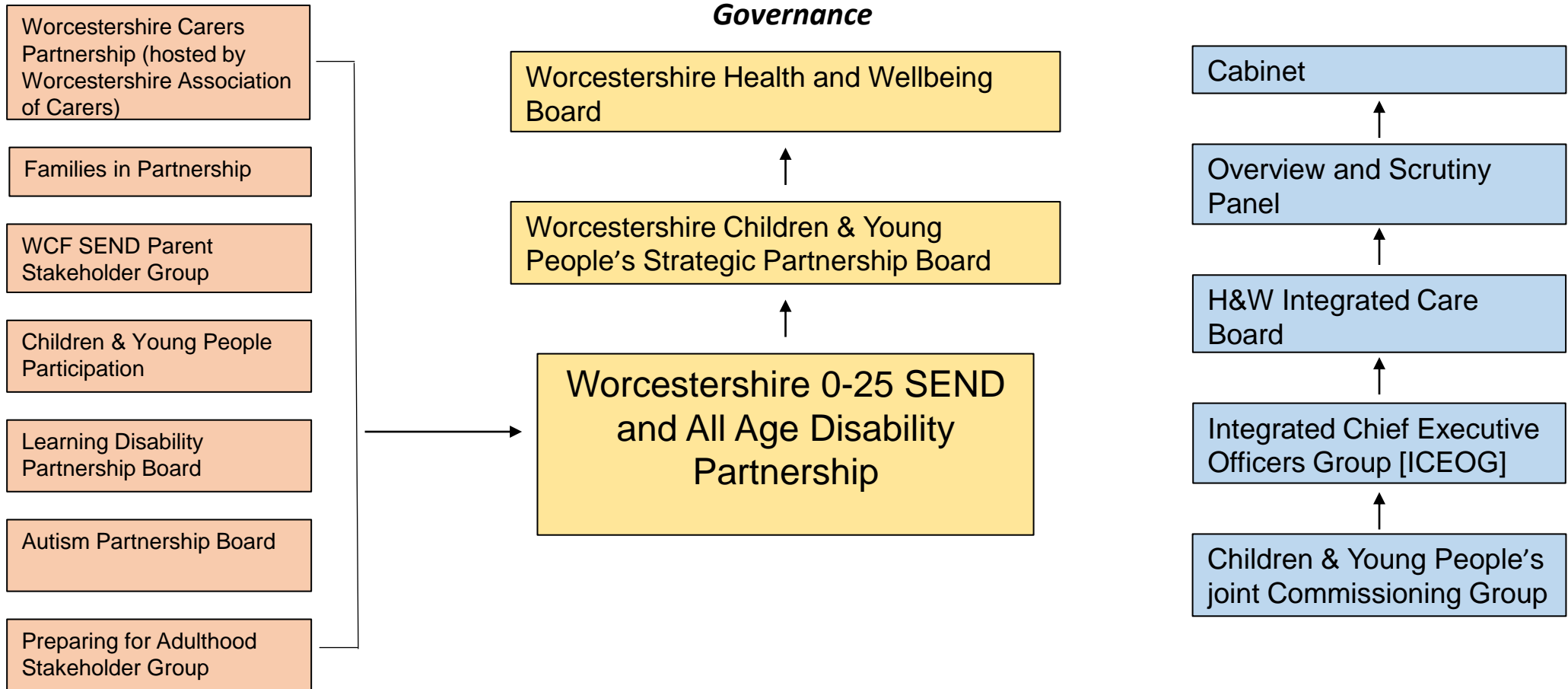
How do we know we are making a difference

- The SEND and All Age Disability Partnership Board will oversee the implementation of this Strategy and review annually the Delivery Plan.
- Board meetings will include regular monitoring of the Key Performance Indicators, evaluation including child young person and family voice and experiences and impact of the actions and activity provided by Delivery Leads that assist in implementing this Strategy.

Governance

Worcestershire Strategy for Children and Young People with Special Educational needs and Disabilities [SEND] 2023-2026

Governance



Delivery plan

<p>Attendance Strategy</p> <ul style="list-style-type: none"> • Actions to improve attendance for children with SEND Support and EHCPs 	<p>Learning Disability Strategy</p> <ul style="list-style-type: none"> • A Place to Live, a Home • Communities which Include Everyone • Purposeful Days • Being Healthy, Body and Mind • Life Changes • Being Safe • The Right Support for Family Carers 	<p>Autism Strategy</p> <ul style="list-style-type: none"> • Improving understanding and acceptance of autism within society • Improving autistic children and young people's access into education and support • Supporting more autistic people into employment • Tackling health and care inequalities for autistic people • Building the right support in the community • Improving support in criminal and youth justice systems • Staying safe 	<p>All Age Carers Strategy</p> <ul style="list-style-type: none"> • Recognised and valued • A life of my own • Supported to be physically and mentally well • Staying Safe 	<p>Early Help Strategy 2022- 2025</p> <ul style="list-style-type: none"> • Embed Early Help across all agencies, partners and our workforce • Engagement of parents/ carers/ children and young people in the multi-agency early help offers of help and support • The development of a coherent start for life offer for all families. • An effective Holiday Activity and Food programme for children with SEND • The development of Family Hubs and co-located services.
--	--	---	---	---

Outcome measures

<p>Partnership Review of Pre-School Forum and Pre School-Assessment (2022/23)</p> <ul style="list-style-type: none"> Local Offer that describes how children under 5 have their needs identified and how needs are met Increase the % of EY with first time EHCPs going into mainstream reception as they transfer to statutory schooling 	<p>Accelerated Progress Plan: Mainstream Inclusion Quality of EHCP's</p> <ul style="list-style-type: none"> Number of Schools actively involved in the EEF (Education endowment foundation) project - making a difference for pupils with SEND % of EHCP decisions made in 16 weeks (minus exceptions) % of EHCPs issues within 20 weeks. Increase the % of children with new EHC Plans that are placed in mainstream schools 	<p>Herefordshire and Worcestershire CYP Mental Health and Emotional Wellbeing Local Transformation Plan</p> <ul style="list-style-type: none"> Redesigned pathways for assessment and diagnostics Improved feedback from Children, Young People and their families Completion of wave 8 of the programme and wave 9 and 10 project plans accepted by NHSE Meeting national targets and standards for access and waiting times 	<p>Not in Employment, Education or Training [NEET] Strategy</p> <ul style="list-style-type: none"> Reduce the Numbers of young people with EHCPs who become NEET aged 16-24 Grow the number of supported internships in the county – baseline of 45 from 2020/21 to 90 by 2025 Ensure all SEND Schools and mainstream secondary meet the number of assigned Provider encounters for young people as measured by the Careers and Enterprise Company (Provider Access legislation) 	<p>Worcestershire County Council's School Organisation Plan</p> <ul style="list-style-type: none"> Monitor the % of new CYP going to into independent provision Decrease the number of children awaiting a specialist placement who are not on a school roll Decrease the number of children awaiting a specialist placement who are on a school roll following a review that has confirmed specialist placement is needed
<p>Attendance Strategy</p> <ul style="list-style-type: none"> Improve overall attendance for CYP with EHCP's Improve overall attendance for CYP with SEND Support Reduce Severe absence for children with EHCP's Reduce Severe absence for children with SEND Support 	<p>Learning Disability Strategy</p> <ul style="list-style-type: none"> Everyone should be able to live in a place they feel is their home, which is suitable for their individual needs and where they feel safe. People with Learning Disabilities should be able to contribute to and be fully part of society, whether through community activities, volunteering or paid employment We want people with Learning Disabilities to have a positive experience of major life changes, including the transitions from childhood to adulthood. 	<p>Autism Strategy</p> <p>Success measures for CYP will be updated by the end of Q2 2023/24.</p>	<p>All Age Carers Strategy</p> <ul style="list-style-type: none"> Parent Carers are recognised and supported in their caring role Young Carers are recognised and supported in their caring role Success measures will be described through the Local Area Joint Commissioning Group and WCP. 	<p>Early Help Strategy 2022- 2025</p> <ul style="list-style-type: none"> Monitor the % of training undertaken by individual agencies Impact of the Early Help in the community events. Take up of the Holiday Activity and Food programme for children with SEND Numbers of Family Hubs and co-located services.

Associated Strategy and Lead Person

Associated Strategy	Lead person
Partnership Review of Pre-School Assessment	Director of Education, Early Years, Inclusion and Place Planning/Director of All Age Disability
Accelerated Progress Plan	Director of All Age Disability
School Organisation Plan	Director of Education, Early Years, Inclusion and Place Planning
NEET Strategy	Head of Skills and Investment - WCC
Attendance Strategy	Director of Education, Early Years, Inclusion and Place Planning
EH Strategy	Public Health Consultant - WCC
Learning Disability Strategy	Lead Commissioner – LD - WCC
Autism Strategy	Lead Commissioner – LD - WCC/ICS Autism Champion - NHS
All Age Carer Strategy	Commissioning Manager – Carers - WCC
Herefordshire & Worcestershire Transformation Plan	Senior Manager – Children and Young People’s Mental Health - NHS